

CHILD LABOUR IN COCOA

Scaling Up To Meet The Challenge

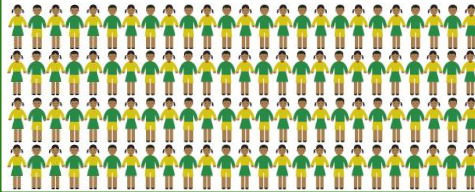


International
COCOA
Initiative

Presentation by Nick Weatherill, ICI Executive Director
The Third World Cocoa Conference (WCC3)
Punta Cana, The Dominican Republic
24th May 2016

THE SCALE OF THE PROBLEM

Globally - 101 million
child labourers in **agriculture**



Africa - 35 million
child labourers in **agriculture**

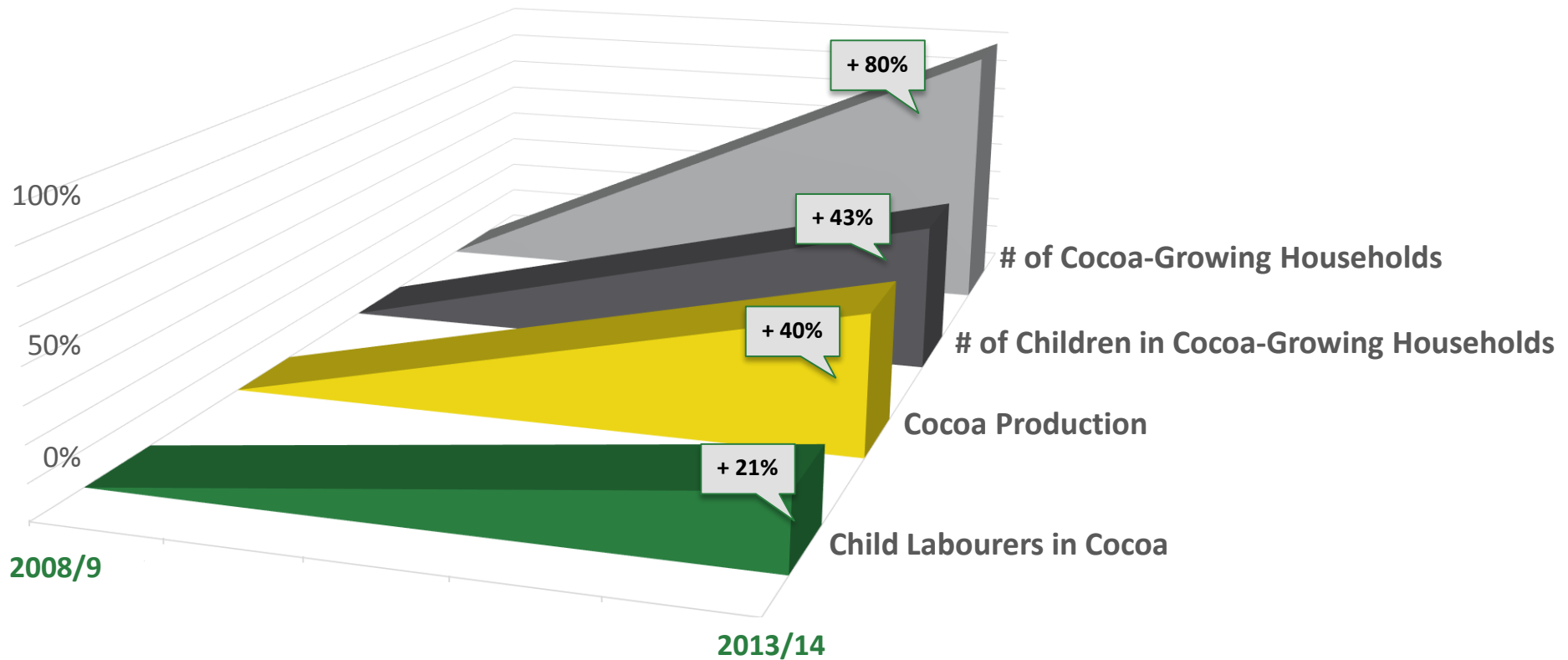


West Africa (CDI+GH)
2.1 million*
child labourers in **cocoa**

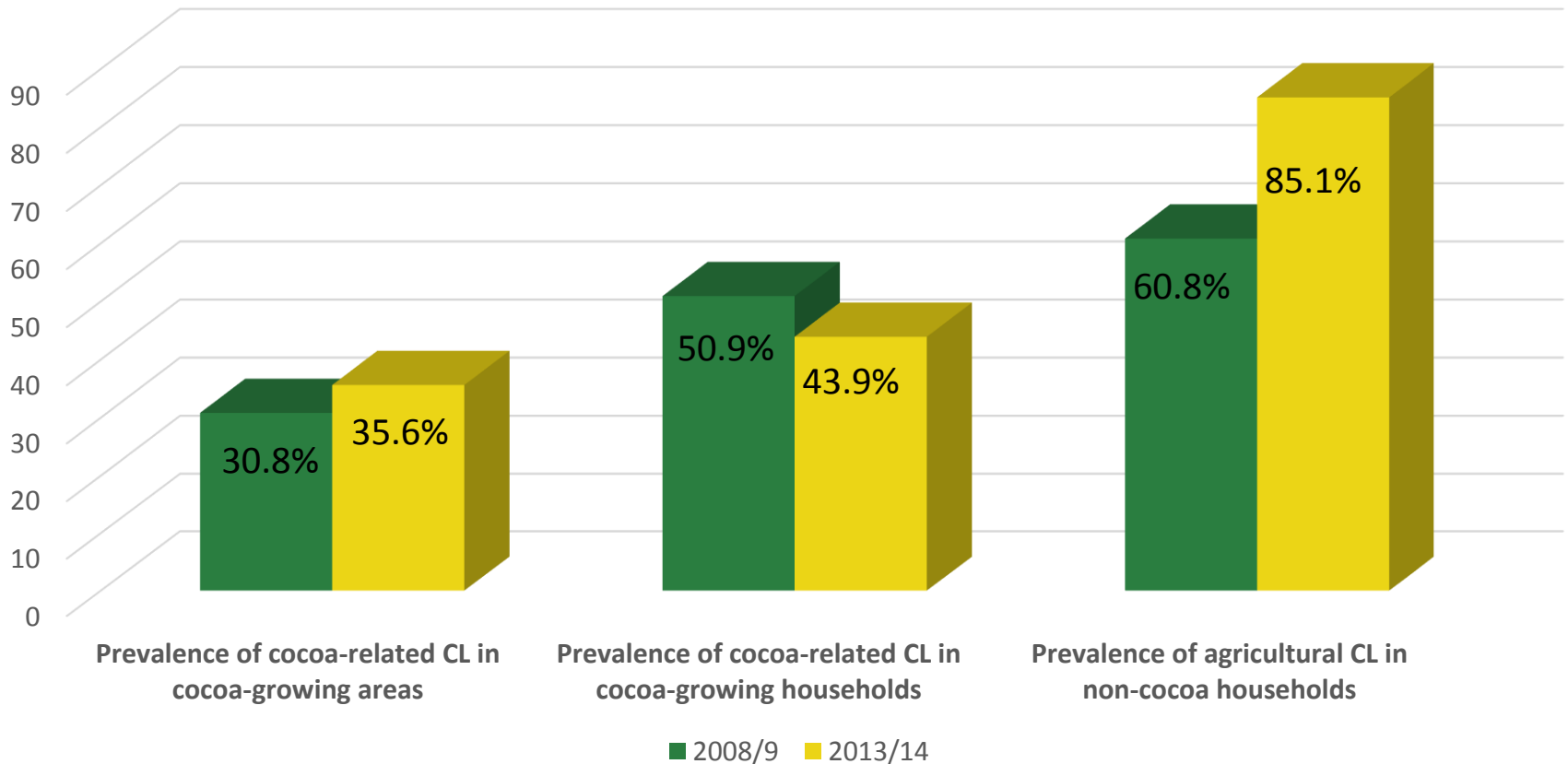


Approximately
35% of children
in cocoa-growing
areas

THE TRAJECTORY OF THE PROBLEM



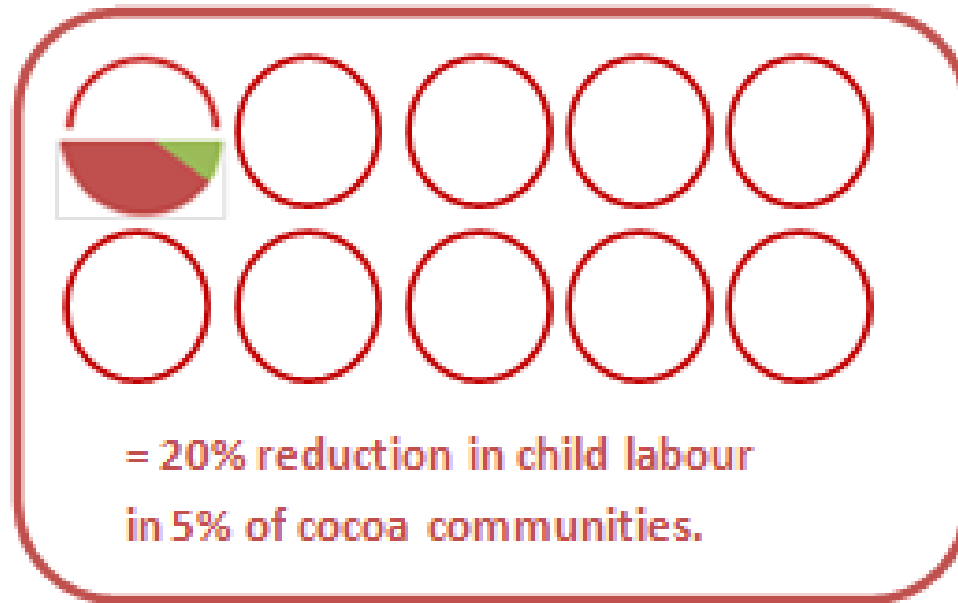
THE TRAJECTORY OF THE PROBLEM



* = based on Tulane University 2013/14 Survey data

THE PROBLEM/SOLUTION MISMATCH

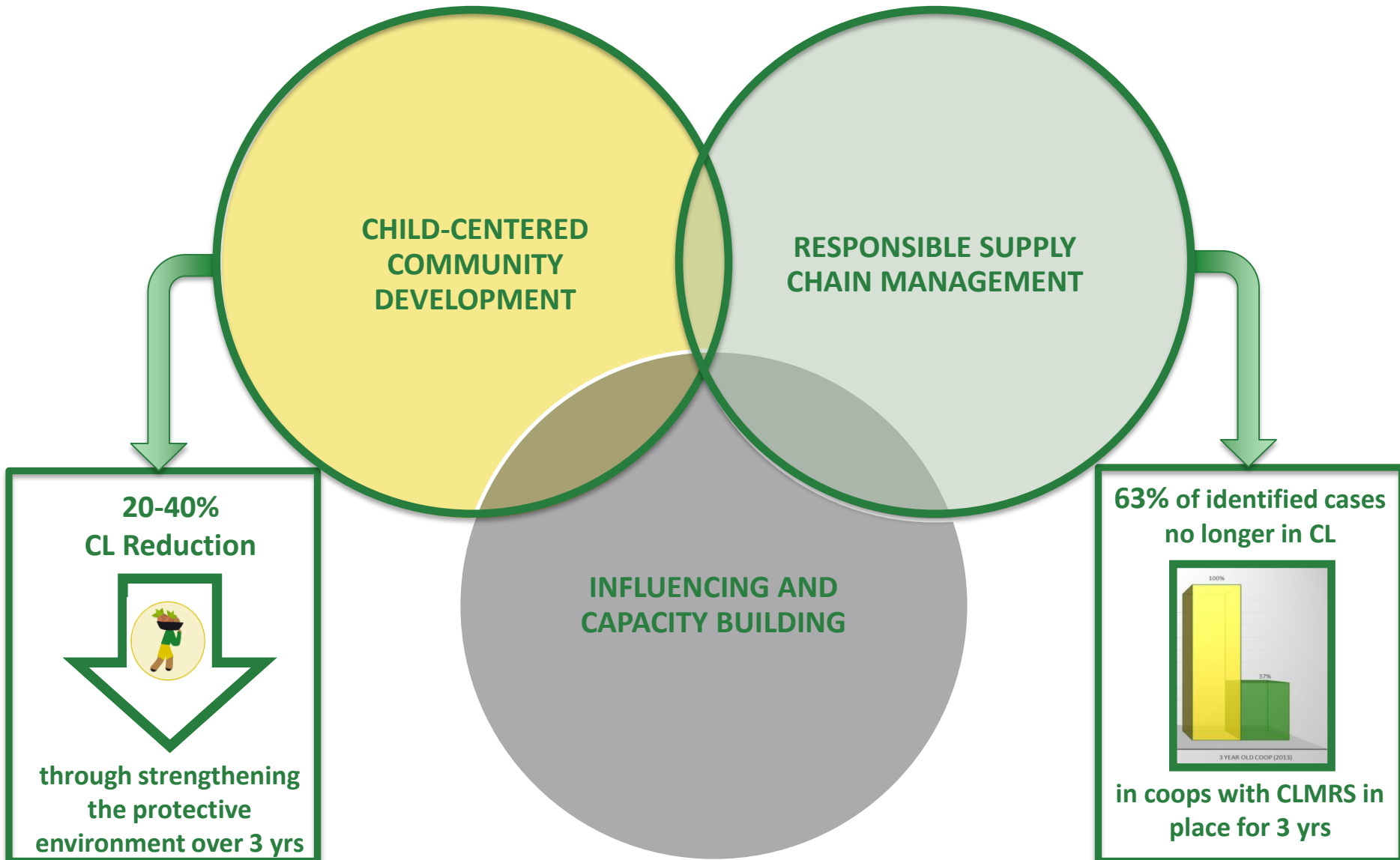
2005 – 2014: ICI BASIC MODEL



Starting baseline:
35% CL in 100%
of communities

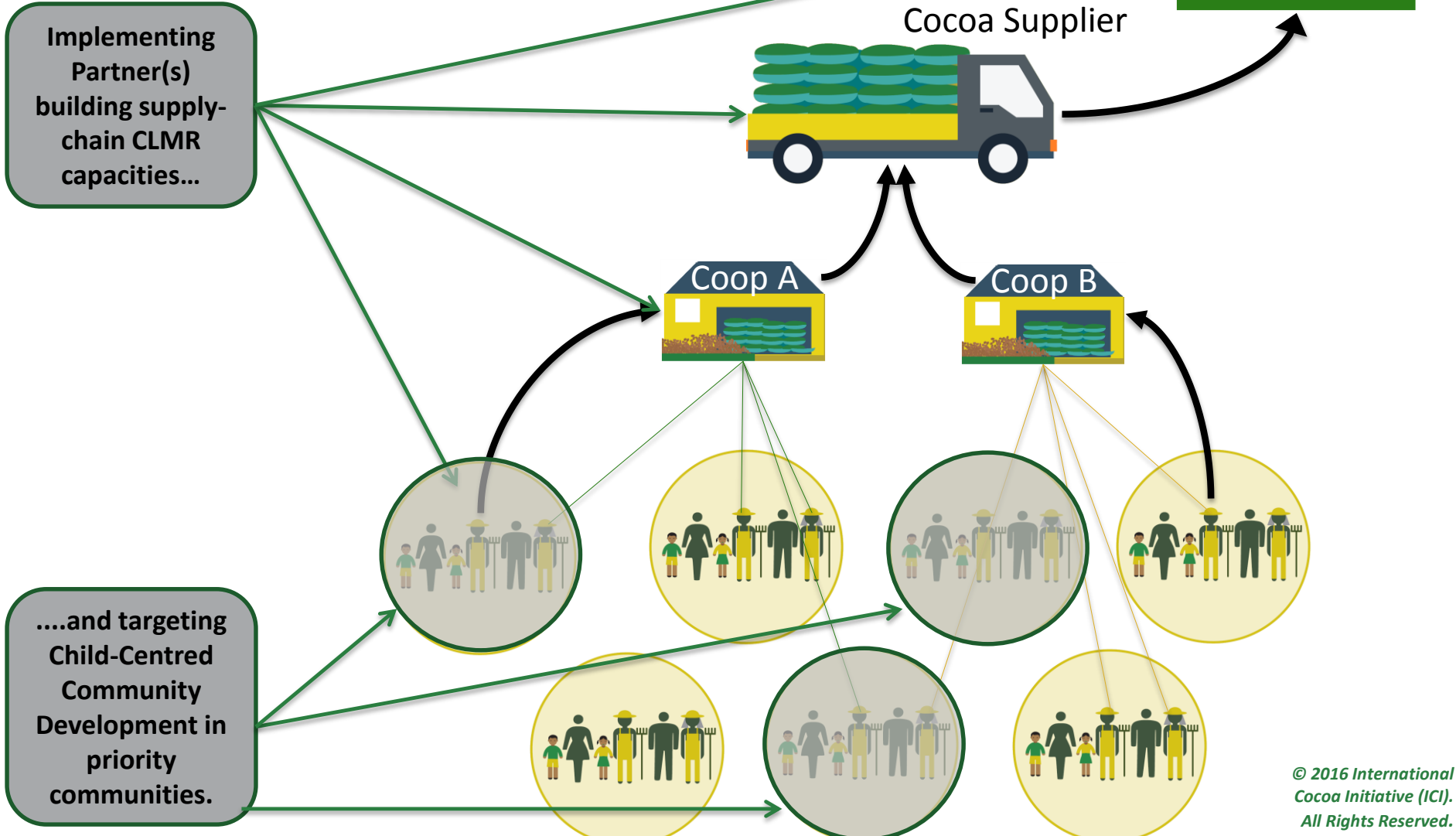
Net 1%
CL Reduction

GOOD PRACTICE 1: Prevention and Response



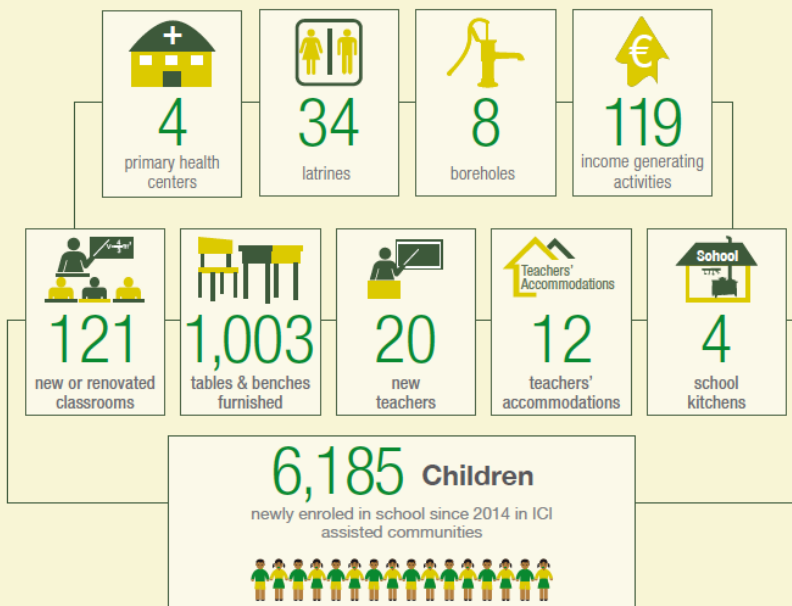
The Hybrid Dual-Approach Model (as adopted by CocoaAction)

- Monitoring all member farmers / farms / households of selected coops.
- Remediation assistance targeted to identified, at-risk CLMR cases.
- Community development package targeted to priority communities identified as most in-need by monitoring.



GOOD PRACTICE 2: Holistic, Multi-Sectorial Action

460 Community Development Actions in 157 ICI-Assisted Communities (2015)



1,885 Remediation Responses in ICI-Supported CLMRS (2015)

Targeted awareness-raising

Labour-saving technologies

Educational support

Income generating activities

Community youth service groups

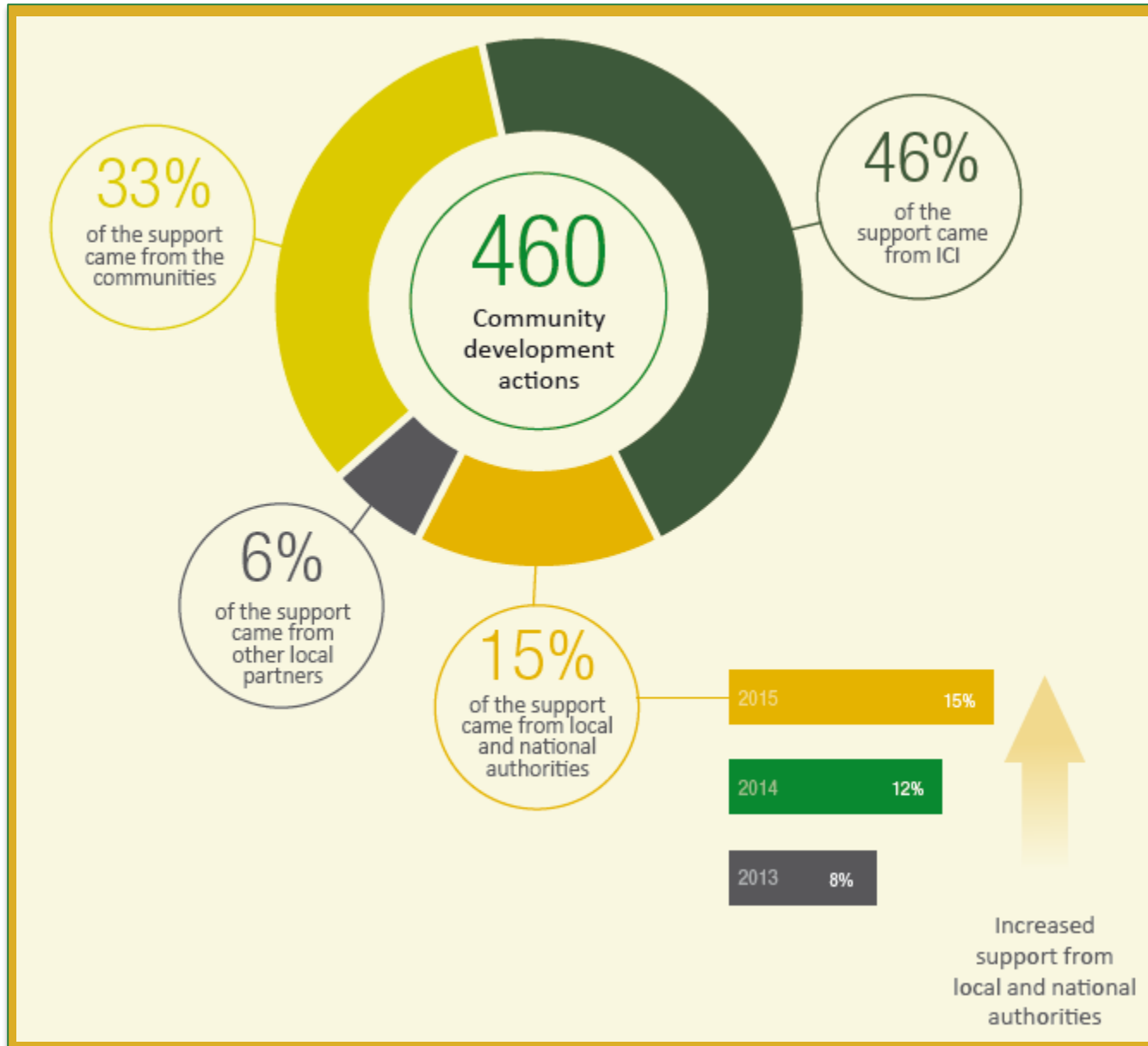
Technical and vocational training

School canteens

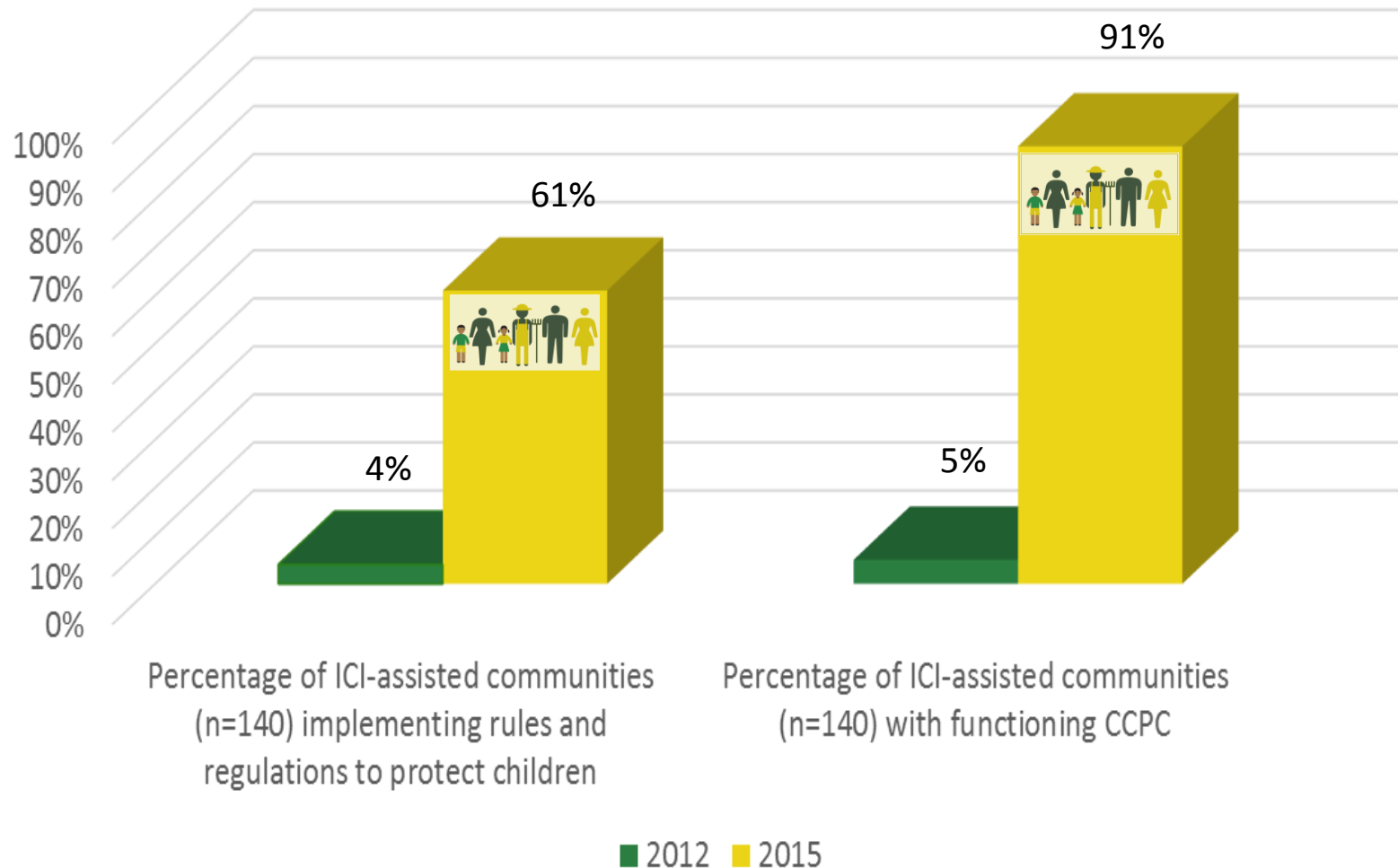
Birth certificates

GOOD PRACTICE 3:

Community Empowerment (Government Advocacy)



GOOD PRACTICE 3: Community Empowerment (Child Protection)



UPSCALING PRINCIPLE 1: Multi-stakeholder Collaboration



UPSCALING PRINCIPLE 2:

Continuous, Evidence-Based Learning



- Good Practice is Dynamic & Evolving
- Monitoring & Evaluation is Key
- Learn from Success, Failure and Others

UPSCALING PRINCIPLE 3:

Prioritisation



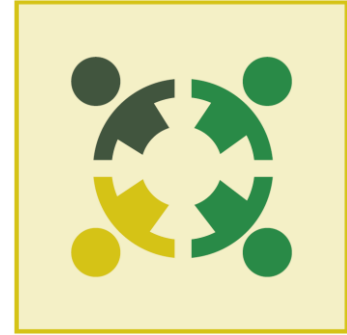
- On the basis of need / feasibility / viability / impact?

UPSCALING CHALLENGES:

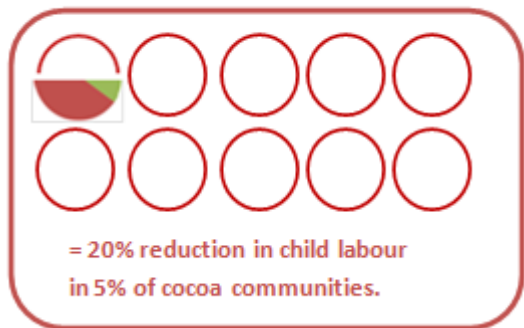
1. Implementation Capacity



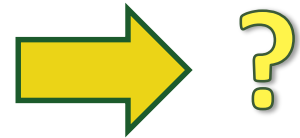
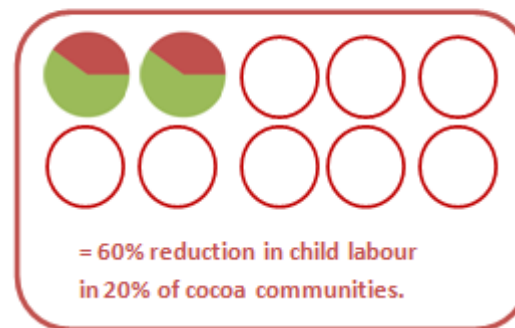
2. Coordination



2005 – 2014: ICI BASIC MODEL



2015 – 2020: IMPROVED / EXPANDED
MODEL (incl COCOAACTION
COMMUNITY DEVELOPMENT +PRODUCTIVITY)



Starting
baseline: 35%
CL in 100% of
communities

Net 1%
CL Reduction

Net 12%
CL Reduction

2005 – 2014: ICI BASIC MODEL



2015 – 2020: IMPROVED / EXPANDED MODEL (incl COCOAACTION COMMUNITY DEVELOPMENT +PRODUCTIVITY)



DELIVERY OF UNIVERSAL PRIMARY EDUCATION AND IMPROVED SECONDARY & VOCATIONAL TRAINING



Net 1%
CL Reduction

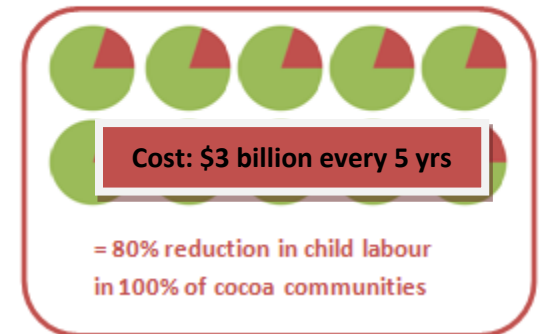
Net 1%
CL Reduction

Net 12%
CL Reduction

Net 56%
CL Reduction

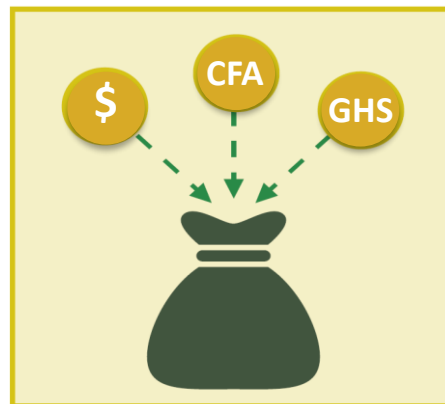
+

EDUCATION & DELIVERY OF SOCIAL PROTECTION FOR THE POOREST 30% OF FARMERS



Net 82%
CL Reduction

3. Resources



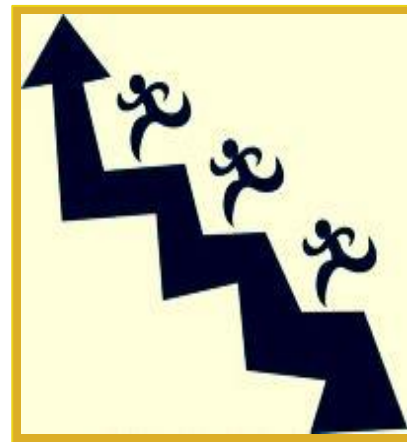
FINAL INGREDIENTS:



Time



Patience



Perseverance



International
COCOA
Initiative

ICI Secretariat Switzerland
Chemin de Balxert 9
1219 Châtelaine - Switzerland
+41 22 341 47 25

ICI National Office Côte d'Ivoire
Il Plateaux, 6ème Tranche, Ilot 215,
Lot 2518, Abidjan - Côte d'Ivoire
+225 22 41 09 14

ICI National Office Ghana
House #5 Mensah Wood Street,
East-Legon - Accra - Ghana
+233 302 998 870

www.cocoainitiative.org
info@cocoainitiative.org