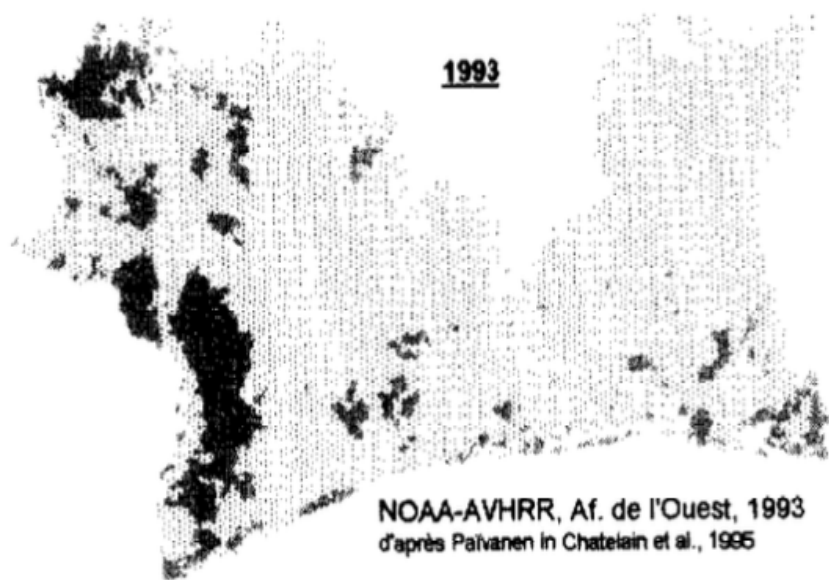


**1955**

Photographie aérienne, 1955  
d'après Avenard et al., 1971



**1993**

NOAA-AVHRR, Af. de l'Ouest, 1993  
d'après Paivänen in Chatelain et al., 1995



Zone forestière non soumise à l'agriculture (forêt dense)

**1990**



**Couverture forestière en  
Côte d'Ivoire, 1990-2015**

**2000**

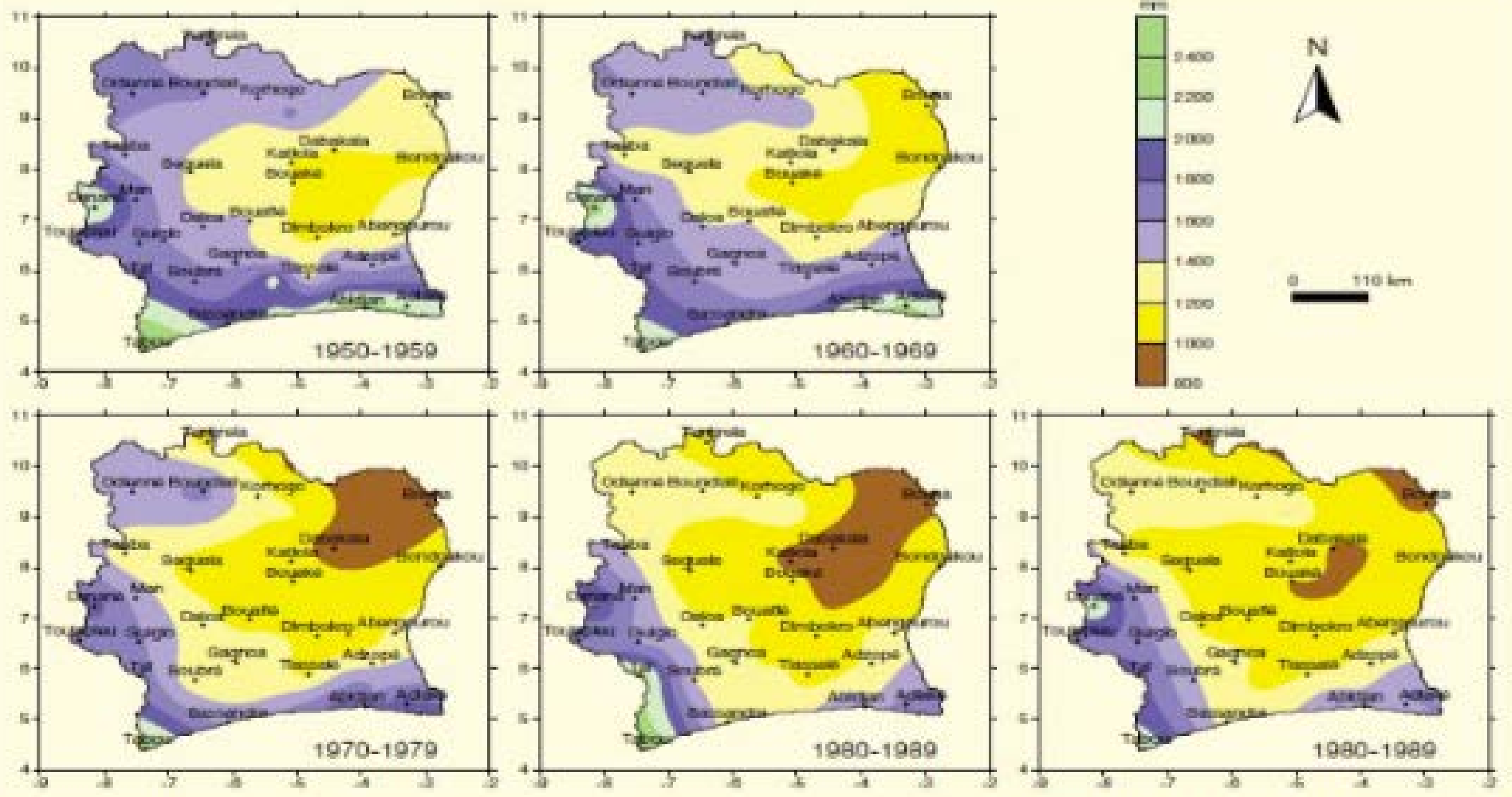


**2015**



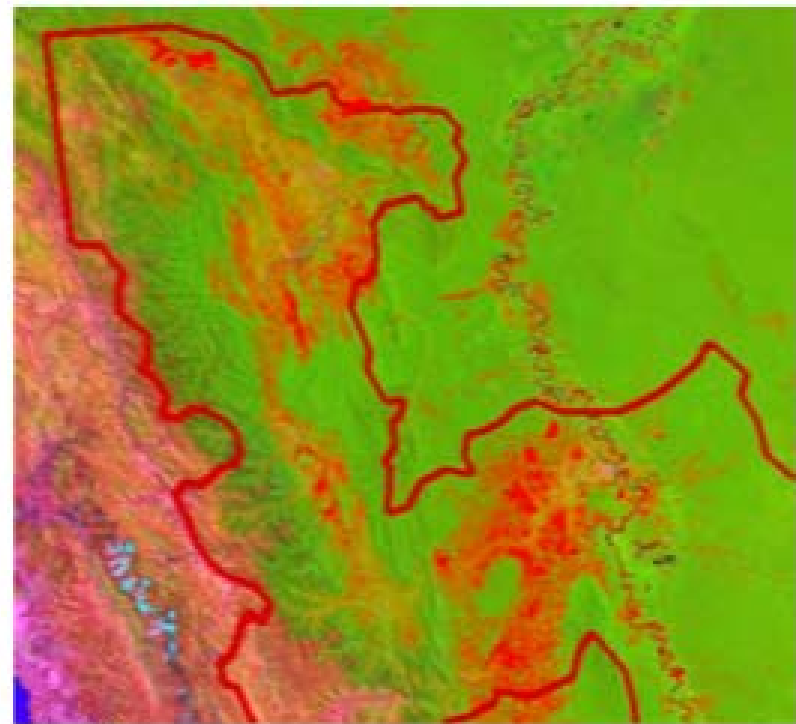
**All this used to be rainforest.**



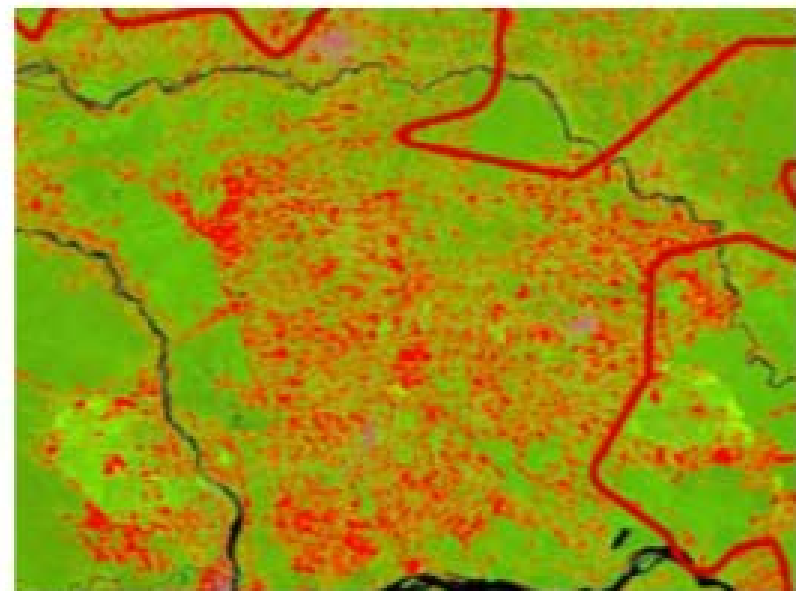


Hauteurs pluviométriques moyennes interannuelles de 1950 à 1989 (BROU, 2010)

# Peru



# Ecuador



# Chocolate companies that were buying cocoa illegally grown in PAs / Parks

BARRY CALLEBAUT

Cargill

Olam

