



## Our plan to make sustainable chocolate the norm

# Why Systemic Change is Needed



**Abject Poverty**



**Child Labor**



**Deforestation**

# FORE ER CHOCOLATE

We will lead a **movement** to make sustainable  
chocolate the norm,

So that the chocolate we all love will be around  
for generations to come.



# Driving a movement



## PROSPERING FARMERS

By 2025 we will  
lift more than  
500,000 cocoa  
farmers  
out of poverty



## ZERO CHILD LABOR

By 2025 we will  
eradicate child labor  
from our supply chain



## THRIVING NATURE

By 2025 we will  
be carbon and forest  
positive

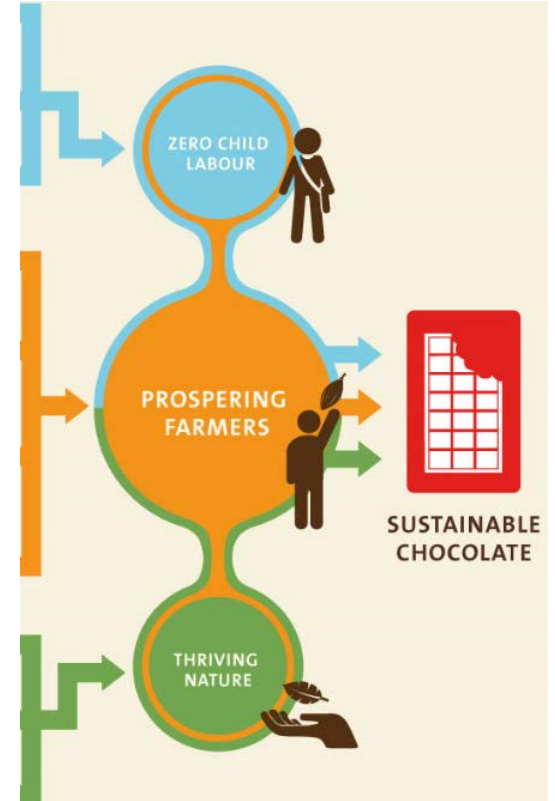


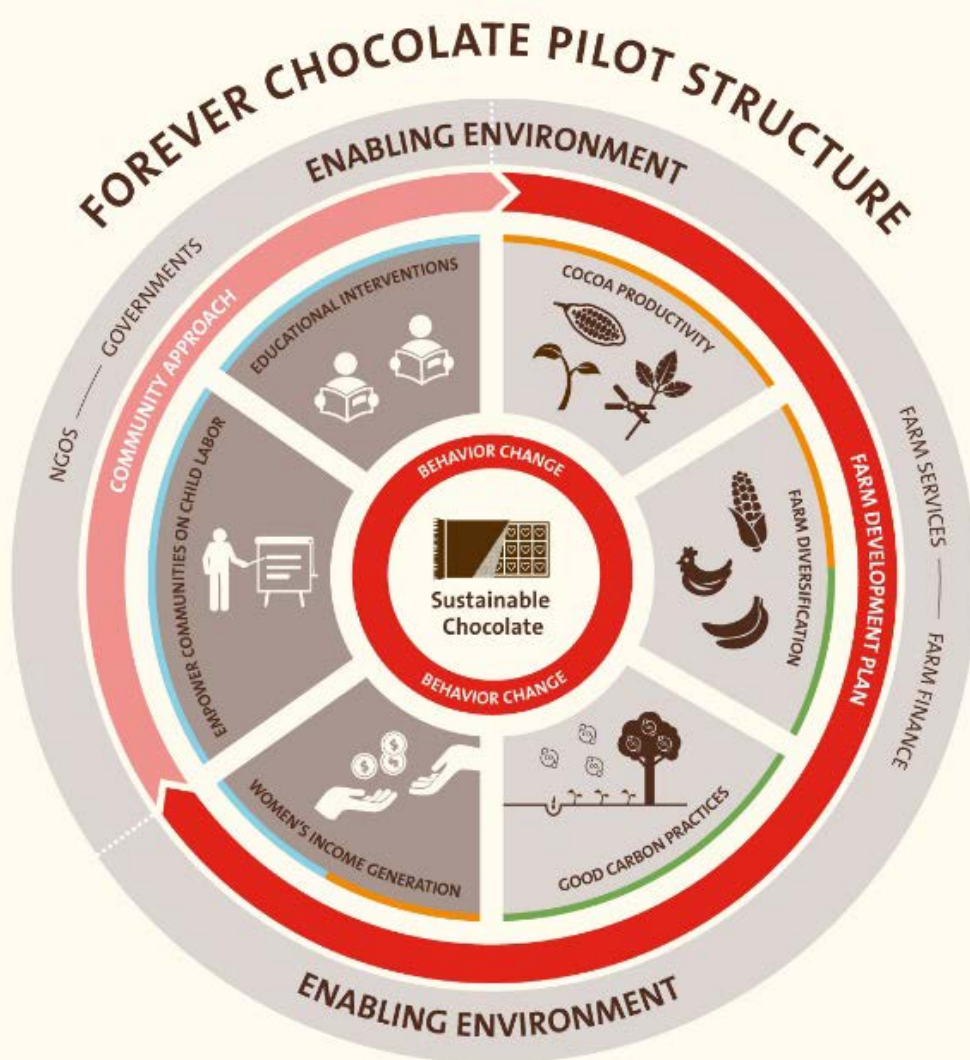
## SUSTAINABLE CHOCOLATE

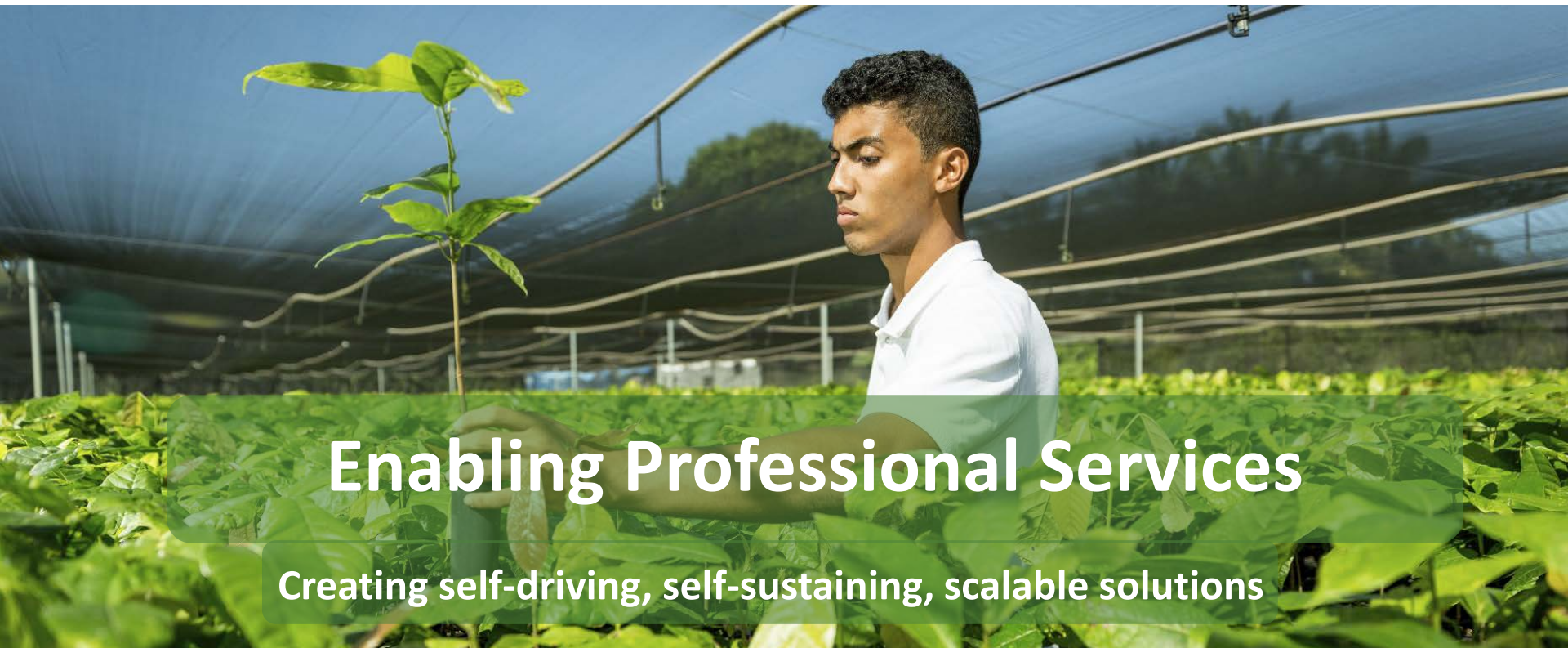
By 2025 we will  
have 100% sustainable  
ingredients in all  
of our products

# Our Approach

Testing **activities** that deliver **outcomes** which create self-sustaining professional farming communities







# Enabling Professional Services

Creating self-driving, self-sustaining, scalable solutions



Providing working capital **loans** enable farmers to **rehabilitate** their farms

--

Move from **risk taking** to a **mainstream model** – farmers interacting **directly** with banks

--

**Proving** the business case

**Creating self-driving, self-sustaining, scalable solutions**





## Creating self-driving, self-sustaining, scalable solutions

# EVER THOUGHT ABOUT WHERE YOUR CHOCOLATE COMES FROM?



Prospering  
Farmers



Zero Child  
Labor



Thriving  
Nature



Sustainable  
Chocolate