



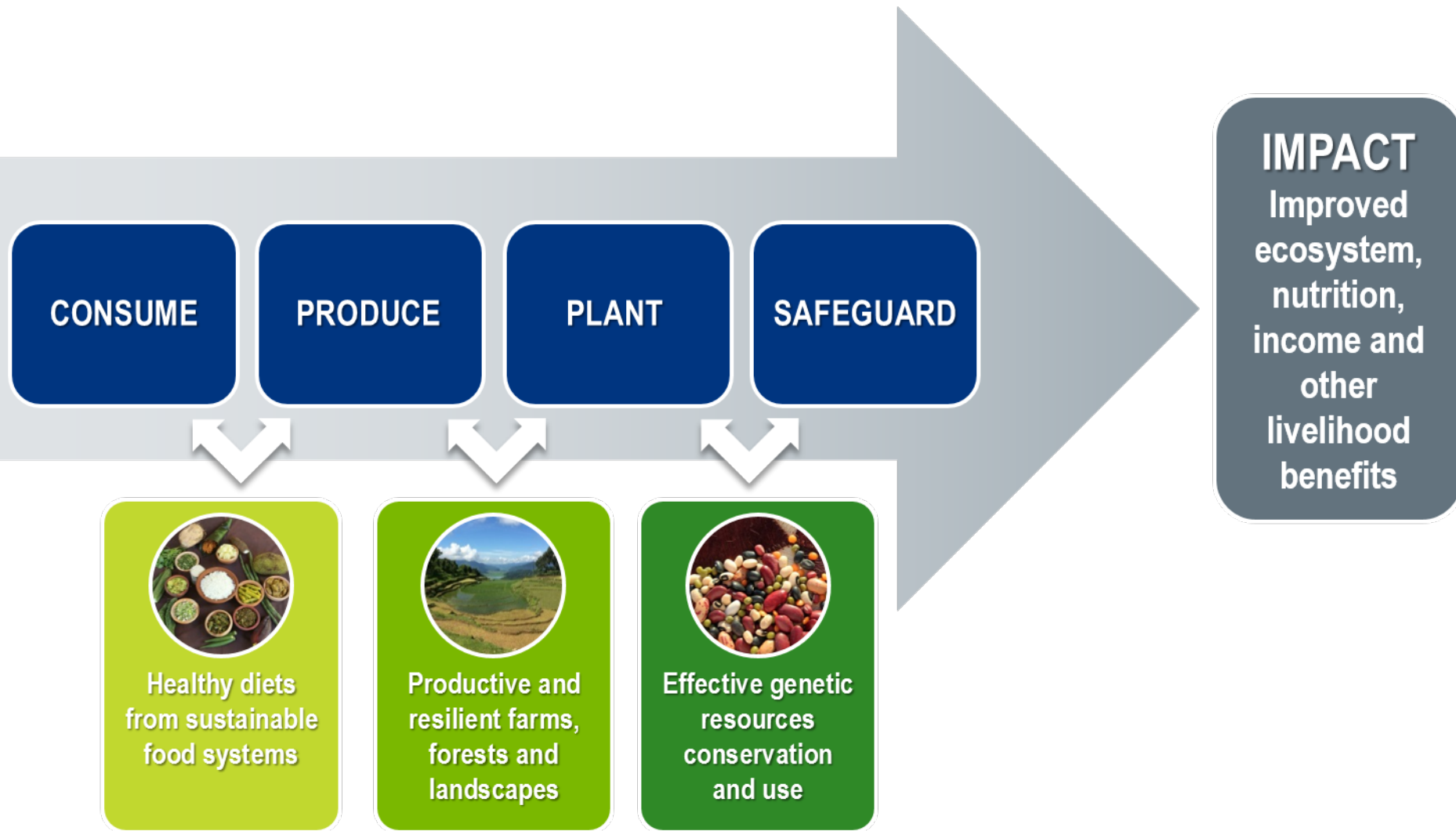
Photo: Krishnasis Ghosh

Bioversity International

Brigitte Laliberte, presenter

23 April 2018

Bioversity International's approach



Ecosystem services and resilience

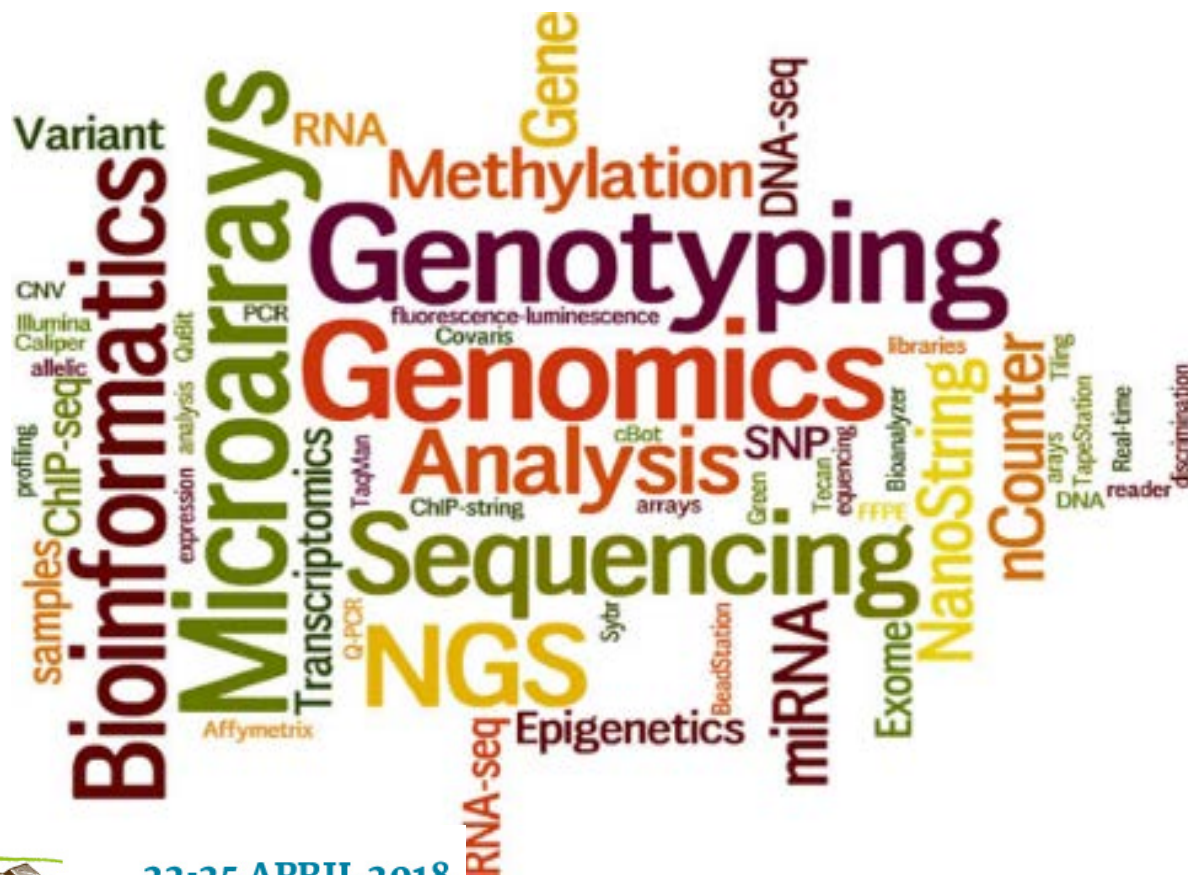


Using an ecosystem service-based approach
can increase agricultural productivity and strengthen the resilience
of rural communities and their natural resource base.



Cacao Genetic Diversity

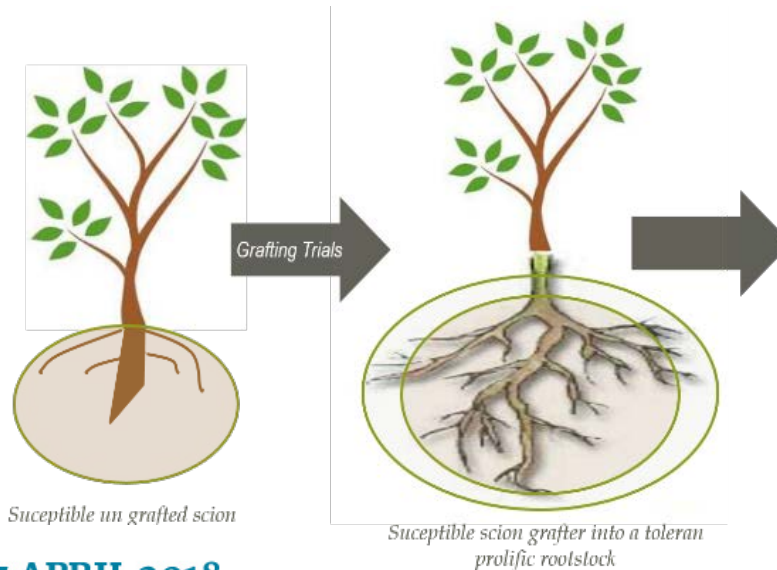
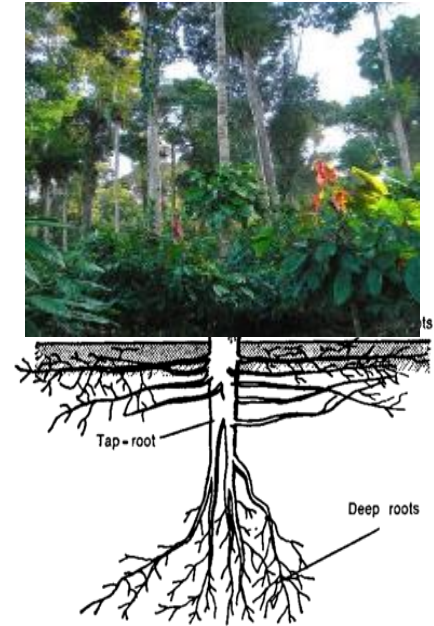
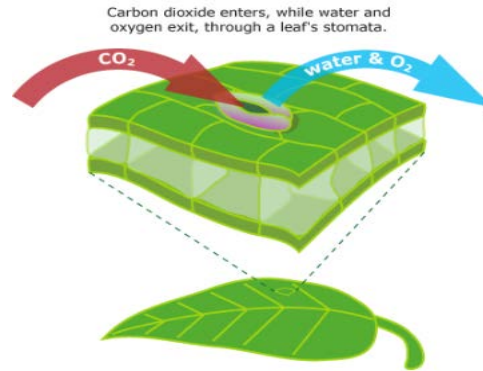
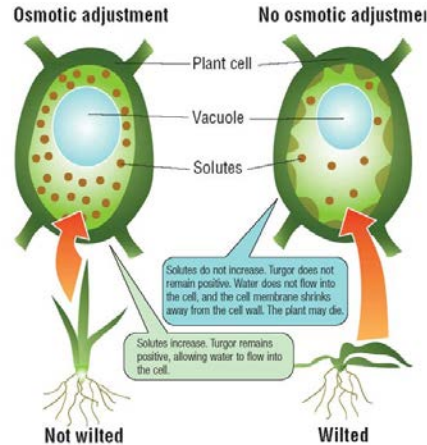
Mitigation & Adaptation - Reducing Risks –
Increasing Opportunities



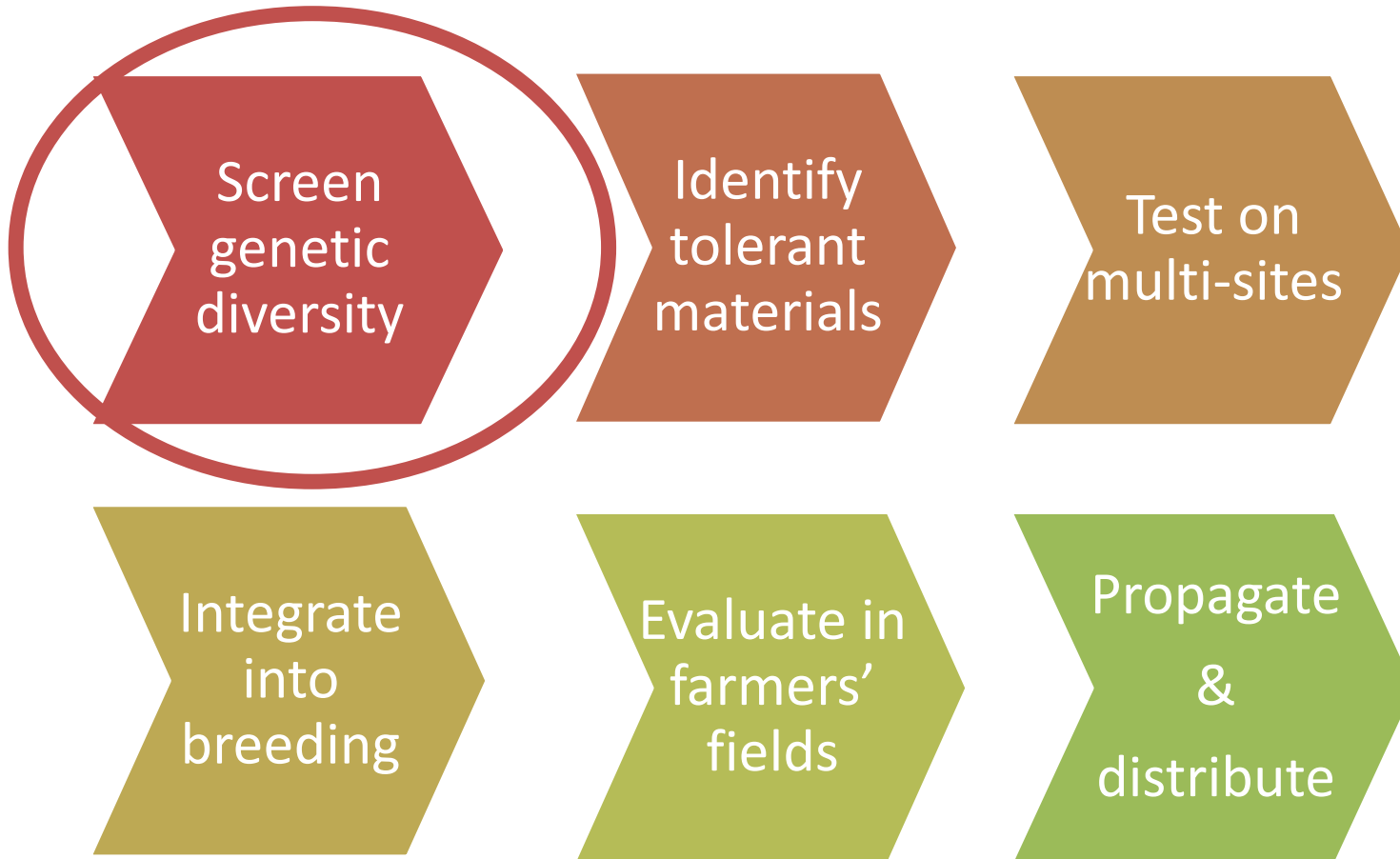
What we know



Agroforestry



What we need to do more of?





Brigitte Laliberte
b.laliberte@cgiar.org

Thank you



www.bioversityinternational.org/subscribe

@BioversityInt