

Mirova Althelia



World Cocoa Conference 2018

The effects of climate change and deforestation: how can farmers adapt or mitigate them?

Edit Kiss

Director of Development and Portfolio Management

22-25 April 2018

Berlin, Germany

Background:

Althelia Climate Fund I

On track to achieve targeted

8% net return by 2021



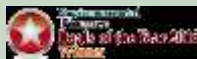
€101m

invested, fully
committed in June 2017

A fund of firsts

ACF I is an innovative fund which is shaping the conservation impact investment sector. We have pioneered a number of “firsts” in this fund including:

- USAID guarantee of 50% at the portfolio level – this was the first carbon DCA
- Developing Nature Conservation Notes with Credit Suisse. This innovative structure was awarded Environmental Finance’s Deal of the Year Award in 2015
- ACF investment in AIDER with SERNANP in Tambopata National Reserve, Peru was recognised by Momentum for Change as an innovative and transformative solution to deforestation



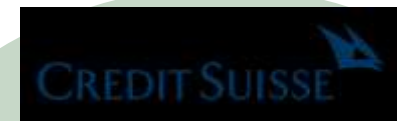
Diverse
counterparties
in the
portfolio

NGOs



Diverse, sustainable revenue streams from investments including:

- carbon
- agroforestry e.g. cacao, coffee
- silvopastoral systems
- cattle ranching
- cooking fuel
- forest management



10

public & private
investors
including:



The Landscape Approach

The role of a sustainable enterprises in the landscape

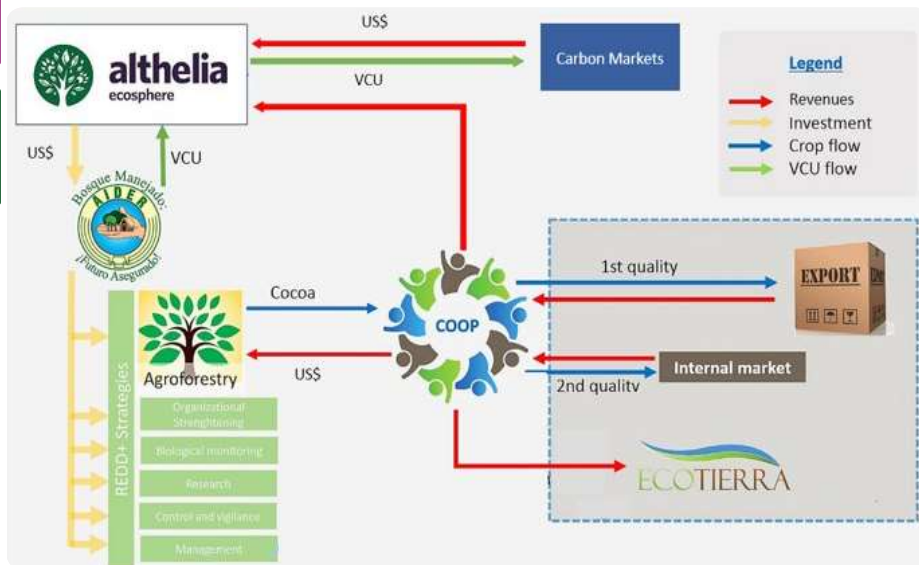
Impact Outcomes



Revenue Streams

Payments for environmental services (REDD+ carbon credits, emissions reductions)

Certified sustainable agriculture commodities (Cocoa, coffee, non-timber-forest-products, essential oils, timber etc)



***The Tambopata-Bahuaja REDD+ and Cocoa Agroforestry Project
Protection-Production-Inclusion Model***

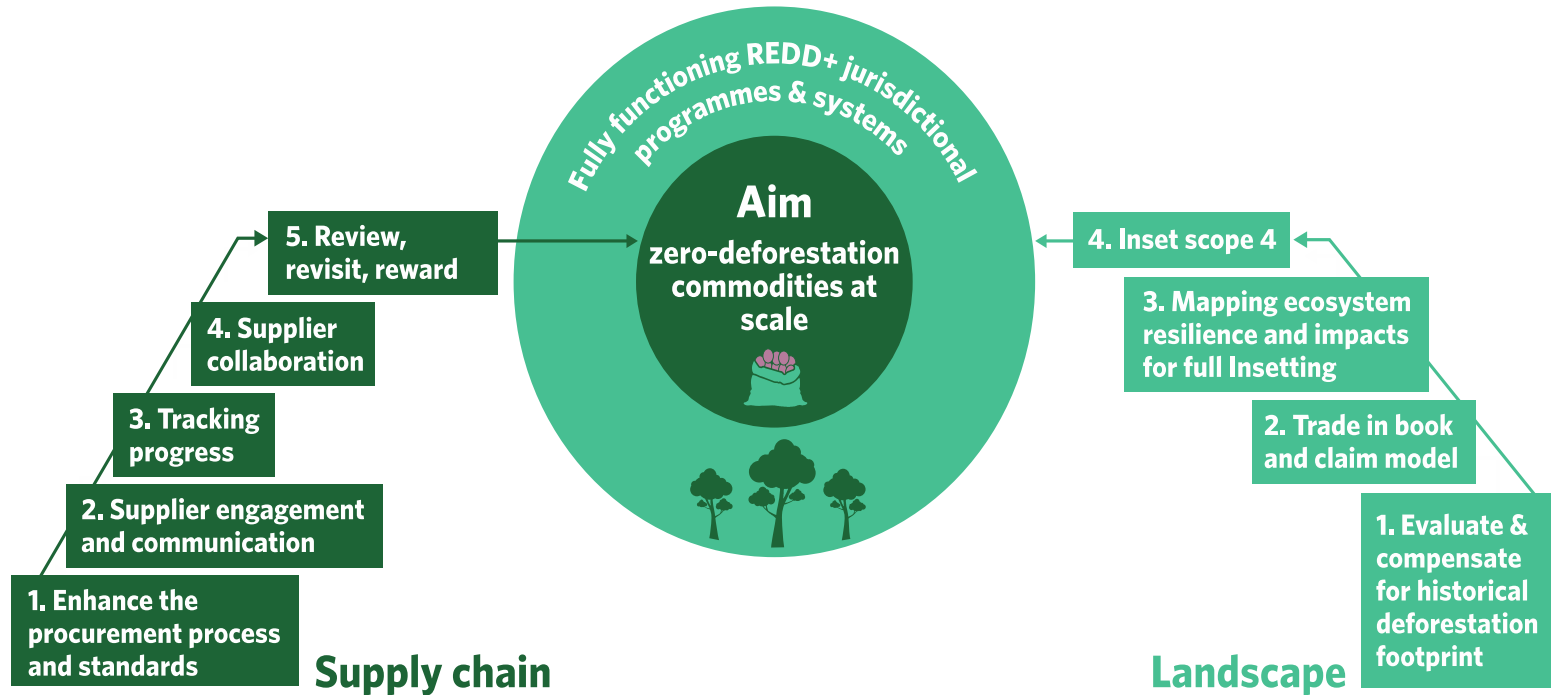
The Challenge of Deforestation in the Cocoa sector



Photo: Mighty Earth

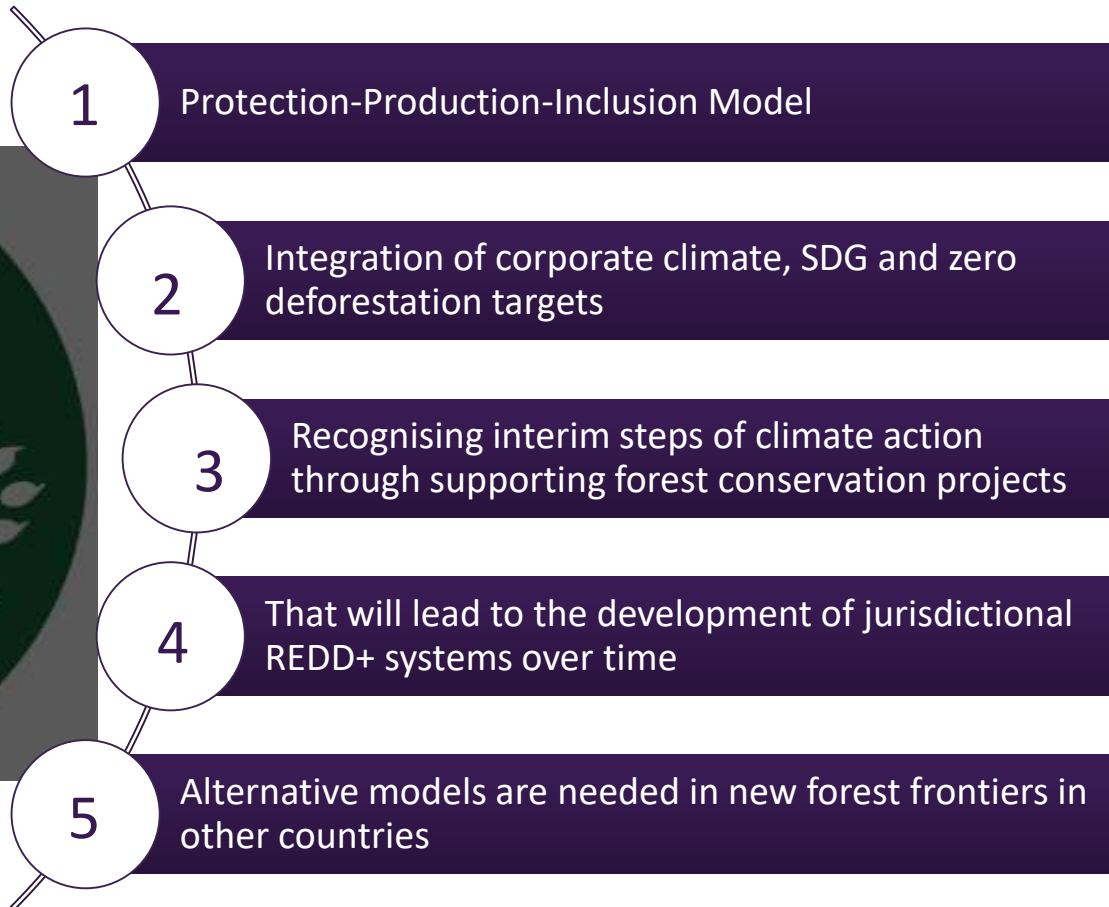
The opportunity

PARALLEL APPROACHES TO ACHIEVE ZERO-DEFORESTATION GOALS



*Supply chain steps adapted from CDP

Critical factors for progressing zero-deforestation targets



Blending climate finance, supply chain finance with public and private investors

Incorporating the value/price of standing forests into chocolate price

Thank you for your attention!

For further reading, see report:

